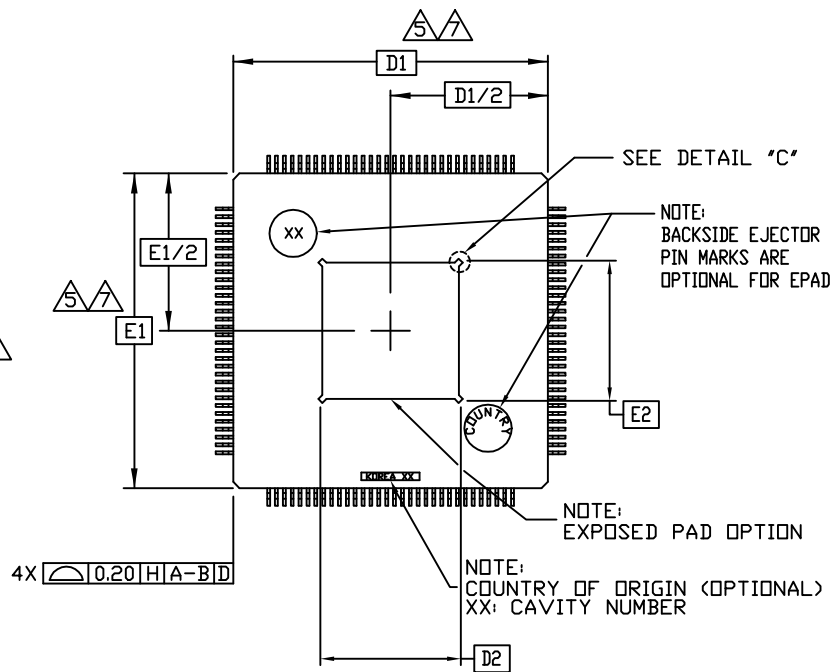
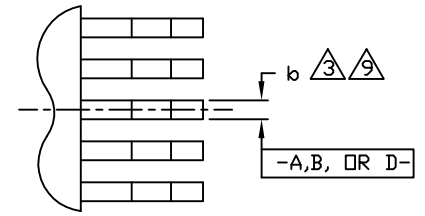


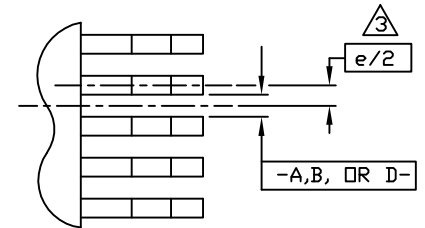
TOP VIEW



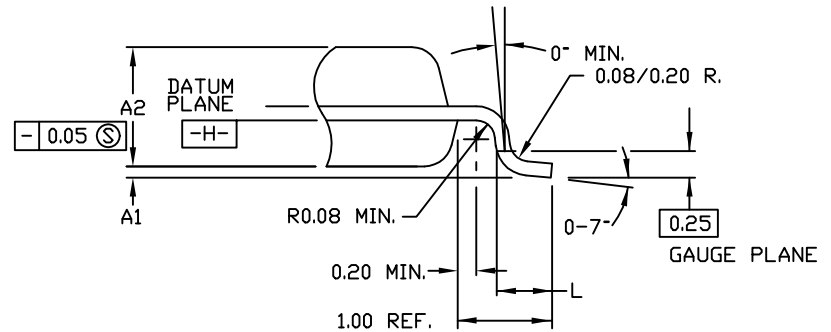
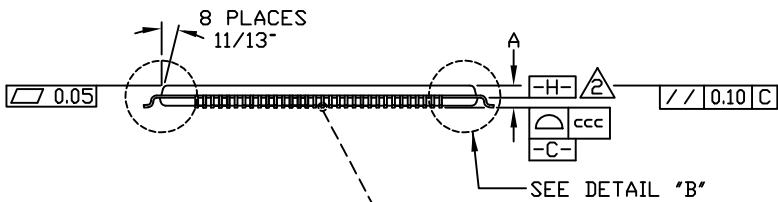
BOTTOM VIEW



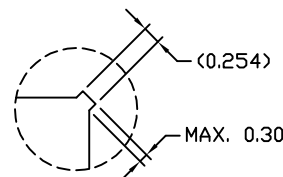
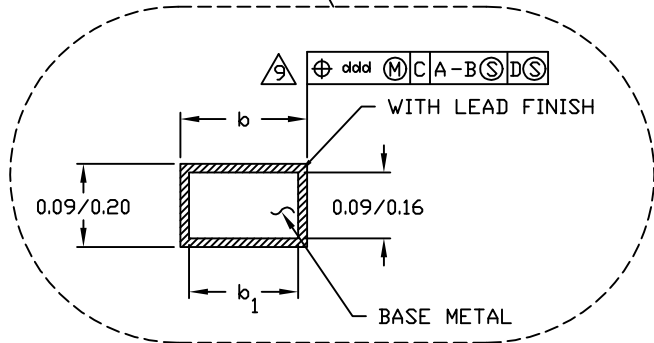
DETAIL "A"
ODD LEAD SIDES



DETAIL "A"
EVEN LEAD SIDES



DETAIL "B"



DETAIL "C"
(EXPOSED PAD CORNER DETAIL)



PROPRIETARY INFORMATION			
TITLE: PACKAGE OUTLINE, 80L TQFP, 12x12x1.00mm WITH EXPOSED PAD OPTION			
APPROVAL	DOCUMENT CONTROL NO. 21-0115	REV B	1 2

NOTES:

1. ALL DIMENSIONING AND TOLERANCING CONFORM TO ANSI Y14.5-1982.
2. DATUM PLANE $\boxed{-H-}$ LOCATED AT MOLD PARTING LINE AND COINCIDENT WITH LEAD, WHERE LEAD EXITS PLASTIC BODY AT BOTTOM OF PARTING LINE.
3. DATUMS $\boxed{A-B}$ AND $\boxed{-D-}$ TO BE DETERMINED AT CENTERLINE BETWEEN LEADS WHERE LEADS EXIT PLASTIC BODY AT DATUM PLANE $\boxed{-H-}$.
4. TO BE DETERMINED AT SEATING PLANE $\boxed{-C-}$.
5. DIMENSIONS D1 AND E1 DO NOT INCLUDE MOLD PROTRUSION. ALLOWABLE MOLD PROTRUSION IS 0.254mm ON D1 AND E1 DIMENSIONS.
6. "N" IS THE TOTAL NUMBER OF TERMINALS.
7. THESE DIMENSIONS TO BE DETERMINED AT DATUM PLANE $\boxed{-H-}$.
8. PACKAGE TOP DIMENSIONS ARE SMALLER THAN BOTTOM DIMENSIONS AND TOP OF PACKAGE WILL NOT OVERHANG THE BOTTOM PACKAGE.
9. DIMENSION b DOES NOT INCLUDE DAMBAR PROTRUSION. ALLOWABLE DAMBAR PROTRUSION SHALL BE 0.08mm TOTAL IN EXCESS OF THE b DIMENSION AT MAXIMUM MATERIAL CONDITION. DAMBAR CANNOT BE LOCATED ON THE LOWER RADIUS OR THE FOOT.
10. CONTROLLING DIMENSION: MILLIMETER
11. MAXIMUM ALLOWABLE DIE THICKNESS TO BE ASSEMBLED IN THIS PACKAGE FAMILY IS 0.50mm.
12. THIS OUTLINE CONFORMS TO JEDEC PUBLICATION 95 REGISTRATION MS-026, VARIATION AND ADD.
13. A1 IS DEFINED AS THE DISTANCE FROM THE SEATING PLANE TO THE LOWEST POINT OF THE PACKAGE BODY.

SYMBOL	JEDEC VARIATION ALL DIMENSIONS ARE IN MILLIMETERS			NOTE
	ADD			
	MIN.	NOM.	MAX.	
A	$\cancel{\text{---}}$	$\cancel{\text{---}}$	1.20	
A ₁	0.05	$\cancel{\text{---}}$	0.15	13
A ₂	0.95	1.00	1.05	
D	14.00 BSC.			4
D ₁	12.00 BSC.			7,8
E	14.00 BSC.			4
E ₁	12.00 BSC.			7,8
L	0.45	0.60	0.75	
N	80			
e	0.50 BSC.			
b	0.17	0.22	0.27	9
b ₁	0.17	0.20	0.23	
ccc	$\cancel{\text{---}}$	$\cancel{\text{---}}$	0.08	
ddd	$\cancel{\text{---}}$	$\cancel{\text{---}}$	0.08	

EXPOSED PAD VARIATIONS						
PKG. CODE	D2			E2		
	MIN.	NOM.	MAX.	MIN.	NOM.	MAX.
C80E-4	5.70	6.00	6.30	5.70	6.00	6.30

 			
PROPRIETARY INFORMATION			
TITLE: PACKAGE OUTLINE, 80L TQFP, 12x12x1.00mm WITH EXPOSED PAD OPTION			
APPROVAL	DOCUMENT CONTROL NO.	REV	
	21-0115	B	2/2